

SEATS & ACCESSORIES



2 UP LIGHT SEAT

860202568

- Extended seat providing convenient 2-up riding.
- Replaces existing seat in seconds.
- Battery Cover with Support (860201720) required for vehicle without battery.

RADIEN
RADIEN-X 400 MM
RADIEN²



2 UP SEAT WITH BACKREST

860202662

- The ultimate in modular seating.
- Allows quick changes between 1-up and 2-up riding.
- Ergonomically correct positions for driver and passenger.
- Two easy tool-less steps:
1 - Clip in seat.
2 - Add LinQ 1 + 1 Backrest.
- Battery Cover with Support (860201720) required for vehicle without battery.
- Anchor kit available 860202059 (when owning 2 sleds and want to change this seat easily to another sled)

RADIEN
RADIEN-X 400 MM
RADIEN²



BATTERY COVER

860201720

- Use in conjunction with 2 up light seat 860202568 or 1 + 1 Seat with backrest 860202662.

RADIEN
RADIEN-X 400 MM
RADIEN²



DEEP SNOW PRO SEAT

860202264

- Ultra compact design for active riders.
- Low, narrow and light seat.
- Allows easier side-to-side changes.
- Provides great freedom of movement.
- Integrated grip areas.
- Stock on Radien² Shredder RE & DS models.

RADIEN
RADIEN-X 400 MM
RADIEN²



HEATED DRIVER SEAT

860202261

- Adds warmth in the coldest conditions.

RADIEN-X 500 MM
RADIEN-X 600 MM



HEATED PASSENGER SEAT AND GRIPS

860202094

Premium passenger seat with backrest and heated grips.

- Adds warmth in the coldest conditions.

RADIEN-X 500 MM
RADIEN-X 600 MM



1 + 1 SEAT WITH BACKREST

860202093

- Passenger seat to transform into a 1 + 1 configuration.
- Includes safety handles.
- Quick, easy installation.

RADIEN-X 500 MM



HEATED GRIPS FOR LINQ 2 UP SEAT

860201840

Allow your passenger to ride in comfort in all conditions.

- Easy unplug.
- Fits for LinQ 2-up seat 860202662.

RADIEN
RADIEN-X 400 MM
RADIEN²



PASSENGER MUFFS FOR 1 + 1 SEAT

860202114

- Ultra warm passenger muffs with fleece liner.
- Designed for extreme cold conditions.
- Easy to remove in warmer weather.
- Fits also LinQ 2-up seat (860202662).

RADIEN
RADIEN-X
RADIEN²



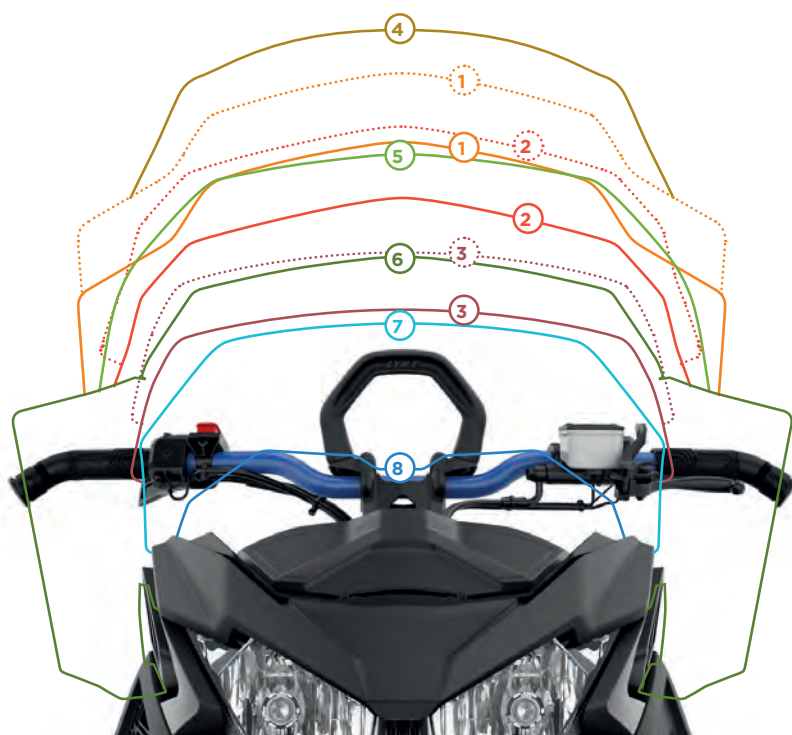
1 + 1 SEAT ELECTRIC VISOR / HEATED BOOTS WIRE HARNESS

860201981

- Works in conjunction with the LinQ 1+1 Seat Heated Grips (860201840).
- Provides 2 extra connections: one connection for electric visor and one connection for heated boots.

RADIEN
RADIEN-X 400 MM
RADIEN²

WIND PROTECTION & MIRRORS



EASILY CHOOSE YOUR IDEAL WINDSHIELD

ADJUSTABLE WINDSHIELDS

	Lowest Position	Highest Position
① HIGH TO EXTRA HIGH	58.5 cm	63.5 cm
② MEDIUM TO HIGH	48.5 cm	58.5 cm
③ LOW TO MEDIUM	37 cm	43 cm

WINDSHIELDS

	Height
④ ULTRA HIGH	27.5" (70 cm)
⑤ HIGH	23" (58.5 cm)
⑥ MEDIUM	17" (43 cm)
⑦ LOW	14" (36 cm)
⑧ ULTRA LOW	8" (20 cm)



WINDSHIELD, ULTRA LOW

- 860201259
- 20 cm high.
 - Sporty and aggressive look.
 - Windshield support not included.
- RADIEN / RADIEN-X**



WINDSHIELD, LOW

- 860202262
- 36 cm high.
 - Includes windshield support.
- RADIEN / RADIEN-X**



WINDSHIELD, MEDIUM

- 860201547
- 43 cm high.
 - Includes windshield support.
- RADIEN / RADIEN-X**



WINDSHIELD, MEDIUM

- 860201864
- 43 cm high.
 - Includes side deflectors and windshield support kit.
- RADIEN / RADIEN-X**

ADJUSTABLE WINDSHIELD
LOW TO MEDIUM

- 860201820
- Quickly change your level of wind protection with the flip of a lever.
 - Compatible with Glove Box Extension (860201523).
 - Adjustable range of 14.37 cm to 43 cm.
 - Windshield support included.
- RADIEN / RADIEN-X**

ADJUSTABLE WINDSHIELD
MEDIUM TO HIGH

- 860201493
- Quickly change your level of wind protection with the flip of a lever.
 - Compatible with Glove Box Extension (860201523).
 - Adjustable range of 48.5 cm to 58.5 cm.
- RADIEN / RADIEN-X**

ADJUSTABLE WINDSHIELD
HIGH TO EXTRA HIGH

- 860201782
- Quickly change your level of wind protection with the flip of a lever.
 - Compatible with Glove Box Extension (860201523).
 - Adjustable range of 58.5 cm to 68.5 cm.
 - Side deflectors and windshield support not included.
- RADIEN / RADIEN-X**



WINDSHIELD, EXTRA HIGH

- 860202257
- 63,5 cm high.
 - Provides maximum wind protection.
 - Includes side deflectors and windshield support kit.
- RADIEN / RADIEN-X**



MIRROR KIT

619400009

- Sold individually.



PIVOTING MIRROR KIT FOR HANDGUARDS

860200893

- Perfectly integrated design and style.
- Mirrors fold away when not in use for easy storage or when covering vehicle.
- Sold in pairs

RADIEN / RADIEN-X / REX / REX² RADIEN²



WINDSHIELD SUPPORT

517307205 • Manta Green

517307206 • Lava Red

517306183 • Black

- For medium and higher windshields

RADIEN / RADIEN-X



FLEXIBLE MOUNTAIN HANDGUARDS

860201591 • Black

- Designed to withstand roll-overs and tough boondocking conditions.
- Feature smaller size deflector made of flexible material.
- Mounts feature a flexible base.
- Fits with Pivoting Mirror Kit for Handguards (860200893).

RADIEN / RADIEN-X / REX / REX² RADIEN²



MIRROR KIT

517306490

- For extra high windshield.

RADIEN / RADIEN-X



AIR DEFLECTOR EXTENSION KIT

860200781

Vehicles with Transparent Handguards 860201383

- Semi-rigid, won't collapse at high speed.
- Delivers additional hand protection from the elements.
- Can be installed and removed in seconds.

RADIEN / REX / REX²



NEW

HANDLEBAR MUFFS

860202207

- Ultra warm muffs with faux-fur liner for extreme cold conditions.
- Thermoformed construction allows muffs to keep their shape and provides more space for hand movement.
- Robust attachment system with magnetic opening and closure.
- Easy to install and remove with gloves on.
- Large transparent section allows visibility of control switches.
- Note: Never use handlebar muffs with finger throttle lever.
- Does not fit vehicles with large handlebar pad and/or mirrors.

RADIEN RADIEN-X RADIEN²



HANDLEBAR MUFFS

619590211

- Ultra warm handlebar muffs with fleece liner.
- Designed for extreme cold conditions.
- Easy to remove in warmer weather.
- Can be used on handlebars with or without handguards and mirrors.
- Inner skeleton allows muffs to keep their shape and gives more space for hand movement.
- Transparent section allows visibility and easy manipulation of control switches.
- Does not fit vehicles with large handlebar pad and/or mirrors.

RADIEN / REX / REX² / XU



HANDLEBAR AIR DEFLECTORS

860201383

- Design delivers better protection and great style.
- Comes with Black/ Grey colored caps.
- Appropriate for trail riding.
- Sold in pairs.
- Does not fit with medium to ultra high windshields.

RADIEN / RADIEN-X / REX / REX²



HANDLEBAR PAD

860201680

- For vehicles without grab handle

RADIEN

BUMPERS



EXPLORER FRONT BUMPER

860201912 • Black

860201949 • White

860201957 • Viper Red

860201958 • Race Orange

860201959 • Sunburst yellow

860201960 • Manta Green

- Provides additional protection.
- Gives the vehicle an attacking expression.

RADIEN RADIEN-X 400 MM



ADVENTURE FRONT BUMPER

860202135 • Sunburst Yellow/ Black

860201787 • Race Orange/Black

860201788 • Viper Red/Black

860201681 • Black/Black

860201474 • White/Black

- Made of stacked lightweight aluminum plates.
- Makes a visual impact and provides added protection.

RADIEN RADIEN-X 400 MM



XC FRONT BUMPER

860201615 • Black

- Add extra protection and attitude with this bumper.

- Perfect integration with or without a skid plate.

- Lightweight cast aluminum heat-treated construction.

RADIEN RADIEN-X 400 MM



FRONT BUMPER

860201858 • Viper Red

860201859 • Race Orange

860201444 • Black

860201445 • White

- Easy-install bumper changes the appearance of your sled in minutes.

RADIEN RADIEN-X 400 MM



HEAVY DUTY FRONT BUMPER

860201819

- Reinforced lightweight aluminum construction.
- Required for the installation of Front Bumper (860202120).
- Standard on Radien-X Commander & LTD, 69 Ranger & LTD, 59 & 69 Ranger Alpine models.

RADIEN-X 500 MM
RADIEN-X 600 MM



EXPLORER REAR BUMPER

860201950 • 3700 • White
860201952 • 3700 • Black
860201954 • 3700 • Viper Red
860202007 • 3700 • Manta Green
860202099 • 3700 • Sunburst Yellow

860201951 • 3900 • White
860201953 • 3900 • Black
860201955 • 3900 • Viper Red
860202008 • 3900 • Manta Green
860202100 • 3900 • Sunburst Yellow

- Protects the rear part of the tunnel.
- Multiple attachment points to attach cargo to the tunnel.

RADIEN
RADIEN-X 400 MM



HITCH BUMPER

860201424 • For BoonDocker RE 3900 and Xterrain RE 3900 (until 2021)

860201250 • For BoonDocker RE 3700 (until 2021)

860201433 • For Rave RE (until 2019)

- 860201471 • For Xtrim RE and Rave RE (2020->)
- Heavy-duty aluminum bumper for hitch applications.
- Easy attachment with no cutting or drilling.

RADIEN



WRAP AROUND FRONT BUMPER

860202120 • Black 500 mm & 600 mm

860202263 • Orange NEW 500 mm & 600 mm

860202254 • 400 mm

- The ultimate front protection for your sled, and attitude with this front bumper.
- 860202120 needs the HD front bumper 860201819 if not as a standard.

RADIEN-X



ADVENTURE REAR BUMPER

860201683 • Black.

860201684 • Orange / Black. For Xtrim RE and Rave RE models (2020 ->)

860201685 • Black. For Rave RE (until 2019) and Rave Enduro.

- Matches the Adventure front bumper.
- Stunning style and construction.
- Made of lightweight stacked aluminum plates..

RADIEN

NEW

FRONT BUMPER CROSS SUPPORT

860202479

- Adds additional side impact protection.
- Provides place to attach additional lights.
- Use with Front Bumpers 860202120 and 860202254

RADIEN-X

Not illustrated



NEW

REAR BUMPER FOR SHORT TUNNEL

860202630 • 3700

860202631 • 3900

860202632 • 4100

- Easy-install bumper changes the appearance of your sled in minutes.
- Also reinforces the tunnel.

RADIEN²



WRAP AROUND SIDE BUMPER

860202189 • Black

860202228 • Orange 600 mm

860202190 • Black

860202495 • Orange NEW 500 mm

860202255 • Black 400 mm

- Protects side panels while still allowing access to them.
- Radien-X 500mm & 600mm models need front bumper 860202120 (Brutal uses 500 mm side bumper and needs front bumper 860202254, but HD bumper is not required).
- Radien-X 400 mm models need also front bumper 860202254.

RADIEN-X



NEW

HITCH BUMPER FOR SHORT TUNNEL

860202647 • 3700

860202646 • 3900

860202648 • 4100

- Required for hitch use (hitch 860201381) and towing for short tunnel.
- Easy mounting with no cutting.
- Also reinforces the tunnel.

RADIEN²

TOWING



C-TYPE HITCH

860201381

- Heavy-duty C-type hitch works in conjunction with hitch rear bumper.

RADIEN²



TOW HITCH

860202116 • models with a heavy-duty bumper.

860202117 • models with a Explorer rear bumper.

860202258 • Radien-X models without rear bumper

- Easy-to-use, sturdy hook for towing applications.
- Does not fit for 2018-2021 BoonDocker DS models, any 2022 BoonDocker models or 2023 Shredder models.

REX / REX² / RADIEN / RADIEN-X



WINCH KIT

860202097

- Ergonomic clutch handle.
- Rugged all-steel gears and bushings, provides more torque and longer life.
- Can be attached to rear of the vehicle's hitch or on HD front bumper (860202120 or 860202254).
- Automatic 100% load-holding brake.
- Sealed solenoid for all weather protection.
- Corded 10 ft. (3m) weather sealed hand-held remote.
- Pulling strength capability of 2,000 lb (907 kg).
- Synthetic rope.
- Onepiece rope guide.
- EC Compliant.

RADIEN-X 500 MM
RADIEN-X 600 MM

SKID PLATES, PROTECTORS & REINFORCEMENT



NEW

SKID PLATE

860202586 • Viper Red
860202417 • Black
860202423 • Manta Green
860202418 • Neo Yellow
860202603 • Catalyst Grey

- Narrower than a Full Body, but wider than an Extreme skid plate in size - good blend of protection and agility.
- Smooth surfaces also reduce drag.
- Improved easy assembly without disassembly.
- Chassis is premarked for easy installation.
- 4 mm thick high impact resistance polypropylene for durability.
- Attachment kit included.

RADIEN²



HEAVY-DUTY SKID PLATE

860202064 • Viper Red
860202065 • Race Orange
860202343 • Black
860201867 • White

- Full coverage skid plate.
- Maximum extra wide protection for tough conditions.
- Injection molded assures a perfect fit and easy installation.
- Attachment kit included.

RADIEN-X 400 MM



NEW

BRAKE AND GEARBOX PROTECTION

860202573

- Extra underbelly protection.
- Protects components such as brakes and gearbox from impacts.
- Available for models with long chaincase.
- Compatible with skidplate.

RADIEN²



HEAVY DUTY SKID PLATE

860202314 • Black
860202313 • Red NEW

- Injection molded plate with smooth bottom surface to reduce drag.
- Wide shape for full protection and maximum flotation.
- Attachment kit included.

RADIEN-X 500 MM



NEW

SNOWFLAP EXTENSION

860202567

- Removable snowflap extension that helps engine cooling in hardpack, low & icy snow conditions when installed.
- Stows on the tunnel when not in use.
- Installs on the stock lightweight snowflap of Shredder models with short tunnel.
- Compatible with stock and hitch bumpers.
- Light or heavy-duty Rear bumper required.

RADIEN²



REAR SKIDPLATE

860202067 • For long chaincase
860202303 • For short chaincase

- Extra underbelly protection.
- Protects components such as brakes and gearbox from impacts.
- Available for models with fullbody skid plate.

RADIEN

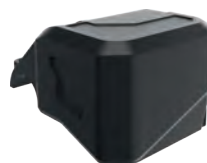


HEAVY DUTY SKID PLATE

860202176

- Injection molded plate with smooth bottom surface to reduce drag.
- Wide shape for full protection and maximum flotation.
- Attachment kit included.

RADIEN-X 600 MM



BRAKE RESERVOIR PROTECTOR

860202171

- Increases impact protection for the brake reservoir.
- Window to see fluid level.
- Cast aluminum construction.
- Stock on 2022 BoonDocker RE & DS models and 2023 Shredder RE & DS models.

**RADIEN
(ONLY MODELS WITH STANDARD CONTROLS ON HANDLEBAR)**

NEW

RAIL REINFORCEMENT

860202611

- Increases rail strength and longevity.
- Standard on Shredder RE models

RADIEN²



FULLBODY SKIDPLATE

860202584 • Viper Red NEW
860202023 • Cyan
860202024 • Race Orange
860201647 • Manta Green
860201646 • Sunburst Yellow
860201631 • Black
860201642 • White

- Injection molded plate with smooth bottom surface to reduce drag.
- 4mm thick high impact resistance polypropylene for durability.
- Wide shape for full protection and maximum flotation.
- Attachment kit included

RADIEN



LING REMOVABLE SNOWFLAP

860201515

- Innovative way to remove snowflap.
- Can be installed with stock flap.
- Stows on the tunnel when not in use.
- Does not fit on BoonDocker RE & DS and Xterrain RE (2022 and up).

RADIEN



RAIL REINFORCEMENT

860201870 • PPS² rear suspension
860202462 • PPS³ rear suspension
• Fits all Radien models with PPS² or PPS³ rear suspension.

RADIEN

ERGONOMICS**ADJUSTABLE RISER**

860201589 • 150-210 mm.
Fits on BoonDocker models.

860201590 • 125-160 mm.
Fits on Rave RE and
Xtrim RE models.

- For straight handlebar.

RADIEN
RADIEN²

FIXED RISER BLOCK

860201874
• 90 mm high

RADIEN
Not illustrated

**HANDLEBAR GRIPS**

860201878 • Black
• Aggressive pattern for extra grip.
• 2 pieces.

RADIEN / RADIEN-X
RADIEN²

**EXTENSION KIT**

860201428 • 190 mm. Works with
all stock wiring and cables. Fits on
BoonDocker models

860201632 • 165 mm. Cable
included. Fits on Rave RE and
Xtrim RE models

860201632 • 165 mm. Fits on Rave
RE and Xtrim RE models

860201427 • 120 mm. Works with
all stock wiring and cables. Fits
on Rave RE and Xtrim RE models

- For straight handlebar.

RADIEN
RADIEN²

**SIDE SUPPORT FOOT KIT**

860201876
• Cast aluminum outer support
for riders that use their
feet to push in corners, or
desire a more locked feel.

RADIEN

**FIXED TOE HOLD**

860201875

- Fixed toe-holds for control and
leverage when
boondocking.
- Fits for 3500 length
tunnel and longer.

RADIEN
RADIEN²

RIDERS FOOT RAMP

860201877

- Customize the fit and
function of your sled.
- Offers a natural angled platform
for riders that push with their feet.
- Fits not for Rave RE model.

RADIEN
Not illustrated

RS HOOD KIT

860202244

- Lightweight hood (only
for Racing purposes).
- Polypropylene construction.

RADIEN

**GRAB HANDLE LOW**

860202073

- Provides more freedom of
movement in active riding.
- Not compatible with Handlebar
Bag (860201565).

RADIEN / RADIEN-X
RADIEN²

RAVE 120 & 200 ACCESSORIES

NEW

LOW WINDSHIELD

860202570

- Low height - 36 cm high.
 - Offers protection with integrated style.
 - Thermoformed molded for clarity.
- RAVE 120 & 200**

NEW

COVER

860202585

- Cover fits Youth model sleds.
 - Quick release buckles for easy, gloved-hand operation.
 - RAP clip intuitively connects to the tunnel for easy installation.
 - Added protection while transporting sleds.
- RAVE 120 & 200**

NEW

CARBIDES

860202555

- 7/16" flat top runner with 4" of 60 degree turning carbide (Woodys).
 - Sold in pairs.
- RAVE 120 & 200**

NEW

REAR WHEEL KIT

860202628 • Rave 120
860202610 • Rave 200

- Additional wheels for the rear suspension for low snow conditions.
 - Includes wheels and mounts.
- RAVE 120 & 200**



PIVOTING MIRROR KIT FOR HANDGUARDS

860200893

- Perfectly integrated design and style.
 - Mirrors fold away when not in use for easy storage or when covering vehicle.
 - Sold in pairs.
- RAVE 200**



FLEXIBLE HANDGUARDS

860201591

- Designed to withstand roll overs and tough boondocking conditions.
 - Feature smaller size deflector made of flexible material.
 - Mounts feature a flexible base.
 - Fits with pivoting Mirror Kit for Handguards (860200893).
- RAVE 120 & 200**

NEW

HEAVY-DUTY SPRING KIT

860202629

- Higher capacity springs for larger riders.
 - Maintain handling and comfort as riders grow.
- RAVE 120 & 200**



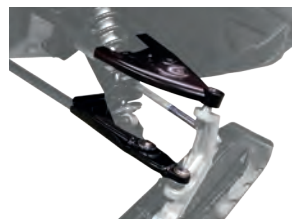
59 & 69 RANGER ALPINE ACCESSORIES



HILL BRAKE

860202078 • 69 Ranger Alpine
860202364 • 59 Ranger Alpine

- Advanced hill brake application for safe stopping on steep hills.
 - Specifically designed for 69 Ranger Alpine model.
- 59 & 69 RANGER ALPINE**



A-ARM WIDENING KIT

860202194

- Provides more stability when turning on steep slopes.
 - Adds 200 mm of width to the front suspension.
- 59 & 69 RANGER ALPINE**



BEACON BAR

860202395

- Sturdy bar for lights (lights not included).
- 59 & 69 RANGER ALPINE**



1+2 SEAT

860202502

- 2 up seat specifically designed for 59 & 69 Ranger Alpine model, allowing you to ride 3-up.
- 59 & 69 RANGER ALPINE**



WORKING LIGHT KIT

860202084

- Working light and warning lights for beacon bar (beacon bar not included).
- 59 & 69 RANGER ALPINE**



CARGO BOX

860202080 • 69 Ranger Alpine

- Large cargo box, 180 L for mounting on the rear rack.
 - For 59 Ranger Alpine use Rear deck 860202415 to add possibility to use big LinQ Cargo boxes 860202416 and 860202085.
- 69 RANGER ALPINE**



WARNING LIGHTS

860202496

- Includes 2 LED lights to be installed at front and 2 at rear of the snowmobile.
 - Control of the lights needs Working Light kit 860202084.
- 59 & 69 RANGER ALPINE**

WARNING SIGNAL FOR ALPINE

860202312

- Push the button warning signal.
- 59 & 69 RANGER ALPINE**
Not illustrated

SKI & SNOWBOARD RACK

860202082

- Rack for two pairs of skis and a snowboard.
- 69 RANGER ALPINE**
Not illustrated

SUSPENSION



FRONT SUSPENSION LFS KIT

860201588

- Adjustable width 975 mm - 1,019 mm.
- Includes KYB 36R shocks and springs.

RADIEN



KYB 36 R FRONT SHOCK KIT

860202370

- For 996 mm ski stance.
- Aluminium shocks with rebound adjustment.

RADIEN-X



CURVED A-ARMS

860201679 • 921 mm

860202345 • 996 mm

- Redesigned to be more effective.
- Provides more clearance for less drag in deep snow.
- Reduces damage from objects hidden below the snow.
- Quick-disconnect sway bar kit included.

**RADIEN / RADIEN-X
RADIEN²**

EASYRIDE REAR END LOCKING PIN

860201948 • Radien-X 500 mm

860202068 • Radien-X 400 mm

- The simple mechanism makes it easy to lock and unlock the Easyride rear end movement for different application needs.

**RADIEN-X 400 MM
RADIEN-X 500 MM**

Not illustrated



FRONT SHOCKS - FOX+ LIGHTWEIGHT 1.5 ZERO QS3-R

860202275

- The newest version of FOX's renowned lightweight shocks and springs to fit deep snow sleds.
- They feature QS3 three position adjustment for quick, easy compression and rebound adjustments and fit S-36 front suspensions.
- FEATURES: -Optimized lightweight spring & shock design. -FOX ice scraper technology (FIST). -One piece, aluminum mounting hardware. -High-flow velocity-sensitive damping. -Internal groove position sensitive technology. -Fully rebuildable and re-tuneable. -Ski stance: 921 mm

**RADIEN BOONDOCKER DS
RADIEN² SHREDDER RE & DS**



FRONT SHOCKS - FOX LIGHTWEIGHT FLOAT 3 EVOL QS

860202277

- Two separate air chambers replace coil springs and offer multiple tuning options.
- The QS3 adjustments offer 3 positions for easy and quick compression and rebound adjustments.
- FEATURES: -Optimized lightweight shock design. -One piece, aluminum mounting hardware. -High-flow velocity-sensitive damping. -Internal groove position sensitive technology. -Fully rebuildable and re-tuneable. -Ski stance: 921 mm

**RADIEN BOONDOCKER DS
RADIEN² SHREDDER RE & DS**

COVERS



NEW

ROC SLED COVER

860202612 • No windshield to low.

- Ride On Cover (ROC) System fits Radien² deep snow sleds.
- Quick release buckles for easy, gloves on operation.
- Updated Rear clip for easier installation and removal.
- Easy handlebar access for moving sled while covered.
- Ride on or off a trailer or sled deck while covered.
- Added protection while transporting sleds.

RADIEN²

NEW

COVER, WHITE

860202486

- Provide protection for your snowmobile.
- Easy to install and stays on even in hard wind.
- Fits with one and two up seats.

RADIEN-X 500 MM & 600 MM

LIGHTWEIGHT COVER

860202379

- Compact, lightweight and packable.
- Covers front lights, handlebar, cluster, glovebox and seat area.

**RADIEN
RADIEN-X**

SLED COVER

860201535 • No windshield to medium. Fits with one up seat.

860201534 • With medium and higher windshield. Fits with one and two up seats.

- Provide protection for your snowmobile.
- Easy to install and stays on even in hard wind.

RADIEN

SLED COVER

860201996 • Fits with one up seat.

860201997 • Fits with one and two up seats.

- Provide protection for your snowmobile.
- Easy to install and stays on even in hard wind.
- Fits also Radien-X 400 mm models with extra high windshield

RADIEN-X 400 MM & 500 MM



SLED COVER

860201868 • With medium and higher windshield. Fits with one up seat.

860201869 • Does not fit on vehicles with extra high windshield. Fits with one and two up seats.

- Provide protection for your snowmobile.
- Easy to install and stays on even in hard wind.

RADIEN-X 400 MM

COVER

860202252

- Provide protection for your snowmobile.
- Easy to install and stays on even in hard wind.
- Fits with one and two up seats.

RADIEN-X 600 MM

TRAILING & COVERS



SUPERGLIDE II PRO

860201216

- No more ripping up the plywood on your trailer.
- Allows skis to glide with ease.
- Traction knobs incorporated for better traction.
- Exclusive venting, protects the deck of your trailer from moisture damage.
- Total length of 6 m.



SUPERGLIDE II WIDE

860201592

- Allows sled skis to glide with ease.
- Specifically designed traction knobs provide improved traction for your feet.
- Oval mounting channels and custom shoulder screws prevent warping by allowing for expansion and contraction that results from varying temperature.
- Exclusive venting; protect the deck of your trailer from moisture damage.
- Each box contains 8 pieces (343 mm x 749 mm).
- Comes with 72 specially coated screws with grommets.
- Total length of 6 m.



SUPERGLIDE EDGE RAIL TRIM

860201217

To secure Superglides on ramps or decks leaving an encapsulated finished edge



SUPER TRACTION GRID

860201593

- Super Traction Grids' strategic grid pattern provides incredible grip and accommodates all snowmobile tracks, even with paddles or studded.
- Each box contains 4 pieces (209 mm x 762 mm) and hardware.



BRP STRAPS

295100389 Quick Lock

860200447 Ratchet Lock

Heavy-duty cargo straps. Adjustable length between 0.3 m and 1.5 m, hooks at both ends.



SUPERTRAC KIT

860201413 • 12" (30 cm)

860201414 • 24" (61 cm)

860201415 • 48" (122 cm)

Includes: 1 piece Supertrac, 1 Supertrac deck hook, 2 end caps and all mounting hardware.



T-STYLE DECK HOOK

860200995



SUPERTRAC DECK HOOK

860201416

- For Supertrac.
- Adjustable and removable hook



SUPERCLAMP II

860200950

- Innovative trailer tie-down system.
- Silicone rubber pads to protect your skis.
- Front and middle handles allowing easy manoeuvrability.
- Pad lock compatible, becomes a theft deterrent.
- Tension adjustment knob – fits all snowmobiles.
- Comes with screw style deck hook



SUPERCLAMP REAR WITH SUPERTRAC

860201425

- Snowmobile tie-down system for rail.
- Silicone rubber pads to protect snowmobile suspension skid.
- Tension adjustment knob – fits all snowmobiles.
- 300 mm Supertrac kit included.
- Pad lock compatible, becomes a theft deterrent.



SCREW STYLE DECK HOOK

860200994

- Most common.
- Comes standard with front Superclamps.
- Screws into the existing hole where you would screw the old style bar and crank into or make your own holes

SKIS

**BLADE XC+ SKIS**

860202460 • Black
860202498 • Viper Red
860202613 • White NEW

The Blade XC+ ski is longer, narrower and lighter than its predecessor and it provides great stability. Thanks to its renewed structure, the ski maintains its qualities in variable snow conditions consistently.

RADIEN / RADIEN-X / REX²

**BLADE DS+ SKIS**

860202265 • Cyan
860202011 • Black
860202012 • White
860202013 • Viper Red
860202015 • Sunburst Yellow
860202016 • Manta Green
860202017 • True Blue
860202019 • Race Orange

The Blade DS+ ski improves the handling of the Lynx snowmobiles in deep snow. The long, redesigned ski makes the snowmobile more predictable to steer, even when turning in deep snow, and it improves handling when side hilling.

RADIEN² / RADIEN / RADIEN-X / REX²

**BLADE DS+ LINER KIT**

860202020

- Ski liners for the Blade DS+ ski.
- Full wide symmetrical version for extreme deep snow applications.
- Sold in pairs.

RADIEN² / RADIEN / RADIEN-X / REX²

**BLADE XC SKIS**

860201655 • Black
860201656 • Sunburst Yellow
860201657 • Blue
860201658 • Lime Green
860201659 • Manta Green
860201660 • Red
860201661 • White
860201662 • Grey
860201946 • Race Orange

It is the perfect combination of flotation in deep snow and sharp steering on hard packed snow. Sold in pairs.

RADIEN / RADIEN-X / REX / REX² / XU

**BLADE SKI HANDLE**

505072976 • Black
505073107 • Yellow
505073108 • White
505073388 • Lava Red
505073513 • Orange
505073651 • Race Orange
505073665 • Sunburst Yellow
505073109 • Viper Red

• High-density colored polyethylene loops.

RADIEN² / RADIEN / RADIEN-X / REX / REX² / XU

**BLADE DS+ CARBIDE RUNNER**

860201044



NEW

CARBIDE RUNNER KIT

860202518

- 860200578 • more aggressive carbides
- Fits for Blade DS, DS+ and XC+ skis.

UNIVERSAL

**LYNX SHOVEL WITH SAW**

860201918

RADIEN / RADIEN-X / REX² / XU

**BRP TOOL KIT**

860202029

- Casing fits perfectly in Deep Snow Seat Box with or without battery (860202028).
- Features high quality tools.
- Includes:
 - Stainless steel open end wrenches; 8-10mm, 10-13mm, 12-14mm, 15-17mm, 16-19mm.
 - 1/4 drive ratchet with 4" extension, hex 8 - 10 - 13 - 16, torx 25 - 30 - 40, allen 4 - 6 - 8, philips #2.
 - Long nose vice grip.

RADIEN / RADIEN-X RADIEN²

**RACING BRAKE PADS**

619690016



NEW

FISKARS AXE NORDEN WITH LEATHER COVER

860202576

Norden's N12 splitting ax is made in Finland. It combines durability, perfect blade and shank balance, advanced blade shape and an extremely sharp angle that together maximize product performance. The shaft of the ax is made of high quality hickory wood, which gives it a natural look and feel. Comes with a leather protective case. Fits perfectly in the ax holder of the large 135L Cargo Box 860202085.

**LOCKABLE FUEL CAP**

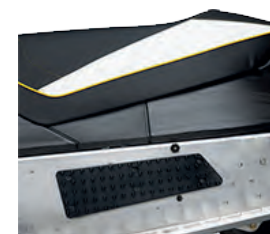
619590085

**PULLING STRAP**

860202382

- Save your back and get unstuck the easy way.
- Lightweight, compact, affordable.
- Extremely robust material.
- Available in red only.
- 2 per pack.

RADIEN / RADIEN-X RADIEN²

**TUNNEL GRIP PLATES**

860200164



NEW

FISKARS GARDEN SAW L SW75

860202578

The Xtract™ garden saw (L) SW75 is a very efficient saw specially designed for fresh wood. Fiskars Xtract™ saws have a retractable blade mechanism and a fixed belt loop, so the saw can be carried and stored safely. The hollow handle allows the blade to be stored inside the handle during transport. Can be attached to a large 135 L Cargo Box 860202085.

NEW

FISKARS SPLITTING AXE X11

860202577

The X11 splitting ax is a handy tool for splitting smaller timber with a diameter of 10-20 cm. Easy to use with just one hand. Also excellent for making campfire lighters. Fits perfectly in the ax holder of the large 135L Cargo Box 860202085.

COOLING



NEW

ICE SCRATCHERS

860202330

- Rail mounted design fits all Radien and Radien² sleds.
- Provides additional cooling in hard and icy conditions.
- Double coil allows use in reverse without damage.
- Can be stored along the rail when not in use. Replaceable tips.

RADIEN
RADIEN²



ICE SCRATCHERS

860201728

- Stock on BoonDocker DS models (2022 and older).

RADIEN / REX²

AIR RADIATOR KIT

860201860

- Provides additional cooling in extreme conditions.
- For 600R and 850 E-TEC engines (electric start is required when assembling).

RADIEN**RADIEN-X 400 MM***Not illustrated*

FRONT RADIATOR KIT

860202465

- Provides additional cooling in extreme conditions.
- For all vehicles with Turbo R engine.

RADIEN-X*Not illustrated*

ELECTRICAL



NEW

AUXILIARY LED LIGHT

860202429

- Riser mounted adjustable auxiliary light for deep snow sleds.
- Provides 1375 extra lumens of light.
- Weighs 540 grams.
- Flips up when needed and folds down out of the way when not in use to avoid damage.
- Integrated switch automatically shuts light off when folded down.
- Operates with the high beam switch.
- Compatible on Radien² Shredder models, Compatible with ultra-low windshield on Radien only.
- Compatible with Tall and Short Riser, but not compatible with Glovebox Extension.
- Harness 515178153 required on Radien platform BoonDocker models.

RADIEN
RADIEN²



HIGH BEAM AUXILIARY LED LIGHT

860201956

RADIEN / RADIEN-X

NEW

USB INTELLIGENT POWER OUTLET KIT

860202433

- Power all your electronics with this easy to mount USB plug.
- Provides 1 USB A (QC*3.0) and 1 USB C (PD**) plugs.
- Power rate : 36 watts.
- Intelligent USB charger for a quick charge when battery is low.
- Installs inside storage compartment.
- Wiring harness included.
- *QC : quick charge
- **PD : power delivery

RADIEN
RADIEN²



LINQ WORKING LIGHT

860201849

- Convenient LinQ mount with swivel allows you to adjust as needed.
- Ultra bright 1000 Lumen output.
- Works when at idle.
- Requires 12V outlet (860201888).

RADIEN-X

NEW

E-LINQ

860202354

- Combines both DESS cord and heated visor/ accessory cord into one.
- Converts standard DESS cord into a powered cord.
- Easy and quick magnetic connection that self locates.
- Reduces chances of a broken connector.
- Increases freedom of movement with less cords.
- Works with any electric helmet and 12V heated visor.
- Maintains power connection 100% of the time.
- Improved desing for easy installation.
- No more drilling required.
- Compatible with Deep Snow models.

RADIEN²

E-LINQ

860202131 • Radien

- Combines both DESS cord and heated shield cord into one.
- Same type of magnetic connector as used on OXYGEN helmet.
- Easily converts standard DESS cord into a powered cord.
- Increases freedom of movement.
- Easy and quick connection that self locates.
- Works with any 12V heated shield.

RADIEN / RADIEN-X

LEARNING KEY

860201872

- For vehicles with Radien-X platform and Rotax 4-stroke engines.

RADIEN-X

RF DESS SPARE KEY

515177742

- (from 2015)

RADIEN / RADIEN-X / REX²



AMBIENT AIR & ENGINE TEMPERATURE MODULE

860201362
RADIEN



3W HEATER

515176786

RADIEN / RADIEN-X



HEATED VISOR KIT

860201283
• Wiring harness included.
RADIEN / RADIEN-X



ELECTRIC STARTER KIT

860201282
• Start your sled with the simple push of a button.
• Battery cover with support (860201720) also required.
RADIEN (VEHICLES WITH 600R AND 850 E-TEC ENGINES, WITHOUT SHOT)



USB POWER OUTLET KIT

860201261
• Includes wiring harness.
RADIEN / RADIEN-X



CTEK BRP 5.0 CHARGER

860200997
RADIEN / RADIEN-X /
REX / REX² / XU

BLOCK HEATER

860201980
• Improves starting in extreme cold temperatures.
• Fits only models with 600 ACE (2020->) 900 ACE and 900 ACE Turbo engines.
• Installation tool required (520002260, sold separately).

RADIEN-X
Not illustrated



RCA ADAPTOR PLUG KIT

515176794
• Y plug power splitter lets you connect 2 heating components or 1 heater and 1 electrical visor.
RADIEN / RADIEN-X / REX² / XU



REWIND STARTER KIT

860201410

RADIEN



POWER OUTLET

860201423 • Wiring harness included.

RADIEN / RADIEN-X

PARTS & PERFORMANCE



PISTON KIT

415129406 • 593 HO including SDI
415129405 • 793 HO
415129854 • 800 E-TEC 2011 and prior
415129855 • 800 E-TEC 2012 and up
415129858 • 800R P-TEK and 800R E-TEC 2010
415129541 • 593
415129542 • 552
• Kit includes: piston, rings, piston pin, needle bearing and circlips.



MAINTENANCE KIT FOR DRIVE PULLEY

REX, REX², XU
415129624 • 2011 (550F)
2011 to 2018 (600 & 600 E-TEC sea-level)
REX², XU
415129625 • 2012 (1200),
2012 to 2018 (600 E-TEC high altitude)
REX, REX², XU
415129626 • 2011 to 2018 (800R P-TEK & 800R E-TEC)
415129627 • 2008 to 2010 (800R P-TEK & 800R E-TEC)
415129708 • 2011 and prior (1200),
2011 and prior (600 E-TEC high altitude)
• Includes: 1 Spring Cover Ass'y, 3 Rollers Ass'y, 1 Bushing (Siding Flange),
• 6 Slider Shoes, 6 O-Rings, 1 Circlip, 3 Cotter Pins & 3 Lever Axles



NGK⁺ SPARK PLUGS

219703120 • BR9-ES
415128524 • 600 CARB & 800 P-TEK - BR9-ECS (Gap 0.8 mm)
415130430 • 600 H.O. E-TEC - PZFR6F
415129429 • 1200 4-TEC - CR8EKB
415129484 • 800R E-TEC - PFR7AB
415129670 • 600 ACE - MR7BI8
415129944 • 900 ACE - MR8BI8
415130154 • 850 E-TEC & 600R E-TEC - ILKR8Q
512059552 • 550F, 600RS - BR9ECS (Gap 0.5 mm)
512060029 • 600 CARB, 800R P-TEK - BR8ECS (Gap 0.8 mm)
• You'll see a difference with genuine NGK spark plugs.
• Solid steel terminal reduces the chance of arcing in the plug cap, which may interfere the electric component.
• A necessity in today's ignition system

XPS LUBRICANTS AND CARE PRODUCTS



XPS 2-STROKE FULL SYNTHETIC OIL

779281 • 946 ml
779282 • 3.785 L
779283 • 9.46 L
Specifically engineered to meet the unique needs of Rotax.



XPS 4-STROKE SYNTHETIC OIL

779286 • 946 ml
779287 • 3.785 L
The best choice for any BRP vehicle with a 4-stroke engine used in winter cold condition.



XPS 4-STROKE EXTREME COLD GRADE SYNTHETIC OIL

779294 • 946 ml
779295 • 3.785 L
BRP's Rotax 4-stroke ACE and 1203 engines.



XPS 2T SNOWMOBILE PREMIUM MINERAL OIL

779277 • 3.785 L
779279 • 18.92 L
Powersport formula with premium anti-wear and anti-corrosion additives.



XPS 2T SNOWMOBILE SYNTHETIC BLEND OIL

779649 • 3.785 L
Designed for all oil injection or pre-mix 2-stroke snowmobiles with electronic fuel injection or carbureted engines.



XPS BRAKE FLUID

779207 • 355 ml
Exceeds all DOT3 and DOT4 brake fluid requirements.



XPS SYNTHETIC CHAINCASE OIL

779185 • 355 ml
Specifically developed for highperformance Lynx models, it represents the best in state-of-the-art chaincase lubrication.



XPS SYNCHROMESH SYNTHETIC TRANSMISSION OIL

779211 • 710 ml
Uses a unique combination of synthetic base stocks.



XPS PRE-MIXED ANTIFREEZE/COOLANT

619590204
5 years (orange) - 946 ml
Ready-to-use pre-mix. Longlife, 5-year formula specially formulated for BRP vehicles.



XPS CARBURETOR CLEANER

779184 • 355 ml
Complete fuel treatment specially formulated to prevent small engine problems caused by Ethanol-blended fuels.



XPS HIGH PERFORMANCE SUSPENSION FLUID

779219 • 946 ml
779210 • for FOX shocks
Engineered viscosity for optimized performance in cold weather conditions.



XPS ANTI-CORROSIVE LUBRICANT

619590093 • 340 g
A multipurpose lubricant that can also be used to prevent rust, corrosion and moisture intrusion.



XPS FUEL STABILIZER

779183 • 240 ml
Ethanol-compatible and will stabilize fuel in your tank to keep it from breaking down and causing hard starting, throttle hesitation and poor run quality.



XPS STORAGE OIL

619590094 • 340 g
High-performance fogging oil designed to protect internal engine parts from rust and corrosion.



OIL FILTER

Use on all Lynx engines. See your dealer for details.

OIL FILL SUPPORT RING

519000296

To learn more about the complete line-up visit xpslubricants.com



LONG LIVE ADVENTURE

XPS Lubricants and Care products are expertly engineered to extend the life of your ride.

We pair the best engineers with the best chemists to create products that exceed tomorrow's technology with the knowledge from an insiders standpoint.

No Shortcuts

Tested on all engine platforms and all materials used in manufacturing today's powersports vehicles - not just one or two. We benchmarked against the best in every category to ensure XPS products meet or exceed each before offering them to you.

They perform and protect in the harshest conditions

From desert heat to saltwater corrosion to the coldest temperatures on earth - XPS products have been proven to protect and perform.

XPS



DRIVE BELTS

850 E-TEC
850 E-TEC Turbo
900 ACE Turbo (150hp)
900 ACE Turbo R
600R E-TEC (Rave RE, Rave Enduro & Shredder 600R)
 417300571

900 ACE Turbo (130 hp)
 417300558
600R E-TEC / 900 ACE
 417300551
600 EFI
 417300586
600 ACE
 417300585

TRACKS 2023

Item	WxLxH in.	WxLxH mm	Pitch	Profile	Std on MY23 vehicle
504153304	15x128x1,35	381x3251x34	2,86		
504153350	15x128x1,75	381x3251x44	2,86		
504153420	16x128x1,6	406x3251x41	2,86	Cobra	Rave Enduro
504153162	16x128x1,75	406x3251x44	2,86		
504152838	15x137x1,35	381x3489x34	2,86	Cobra	Adventure LX
504154057	15x137x1,5	381x3487x38	2,86	Studded	Rave RE (spring model)
504153706	15x137x1,6	381x3487x41	2,86	Cobra	
504153967	15x137x1,6	381x3487x41	2,86	Cobra	Rave RE
504153669	15x146x1,6	381x3705x41	2,86	Cobra	Adventure
					Adventure SC
504154301	15x146x2,5	381x3705x64		PowderMax	Shredder RE 3700
504154496	15x154x2,5	381x3912x64		PowderMax Light	Shredder RE 3900 Shredder DS 3900
504154453	15x154x3	381x3912x76		PowderMax3 LgtLarge	Shredder DS 3900
504154454	15x163x3	381x4120x76		PowderMax3 LgtLarge	Shredder DS 4100
504152803	16x137x1,75	406x3487x44	2,86		
504153293	16x137x2,2	406x3487x56	2,86	PowderMax Flex Edge	
504153103	16x137x2,25	406x3487x57	2,86		
504152987	16x146x1,5	406x3705x38	2,86	Deep Snow Glider	
504153670	16x146x2	406x3705x51	2,86	PowderMax	Xterrain 3700 Xterrain RE 3700
504153198	16x146x2,5	406x3705x64	2,86	PowderMax Flex Edge	
504153008	16x146x2,5	406x3705x64	2,86	PowderMax	Xterrain RE 3700 850 E-TEC (spring model)
504153349	16x153x3	406x3886x76	3	PowderMax III	
504152962	16x154x1,5	406x3912x39	2,86	Deep Snow Glider	49 Ranger
504153173	16x154x2	406x3912x51	2,86	PowderMax	Xterrain 3900 49 Ranger ST
504153009	16x154x2,5	406x3912x64	2,86	PowderMax	49 Ranger PRO Xterrain PRO
504153199	16x154x2,5	406x3912x64	2,86		
504153791	16x154x2,5	400x3912x64	3,5	Powder-Max Light FlexEdge	Shredder 600R
504153785	16x154x3	400x3912x76	3,5	PowderMax Light	
504153276	16x163x1,5	406x4141x39	2,86		
504153401	16x163x2,3	406x4141x59	2,86	PowderMax	
504153016	16x163x2,3	406x4141x59	2,86		
504153792	16x163x2,5	406x4120x64	3,5	PowderMax Light	
504153786	16x165x3	406x4120x76	3,5	PowderMax Light	
504152817	20x154x1,25	500x3912x32	2,86		
504153036	20x154x1,25	500x3912x32	2,86	Studded	
605613004	20x154x1,5	500x3912x38	2,86		
504154260	20x154x1,5	500x3912x38	2,86	Cobra Silent Track	59 Ranger 600 EFI
504154259	20x154x1,5	500x3912x38	2,86	Studded	Commander GT 59 Ranger Alpine
504154312	20x154x1,75	500x3912x44	2,86	PowderMax	Commander Commander Limited Commander GLX 59 Ranger 600 ACE
					Xterrain Brutal
504154256	20x154x2,35	500x3912x60	2,86	PowderMax	
504153928	24x156x1,25	600x3968x32	2,52		
504153927	24x156x1,25	600x3968x32	2,52	Studded	69 Ranger Alpine
504154257	24x156x1,5	600x3968x38		Cobra Silent Track	69 Ranger 69 Ranger Limited 69 Ranger Snow-Cruiser
504153248	24x156x1,75	600x3968x44	2,52	Cobra	